



# PIECE C

## PLAN DE SITUATION

Mars 2019







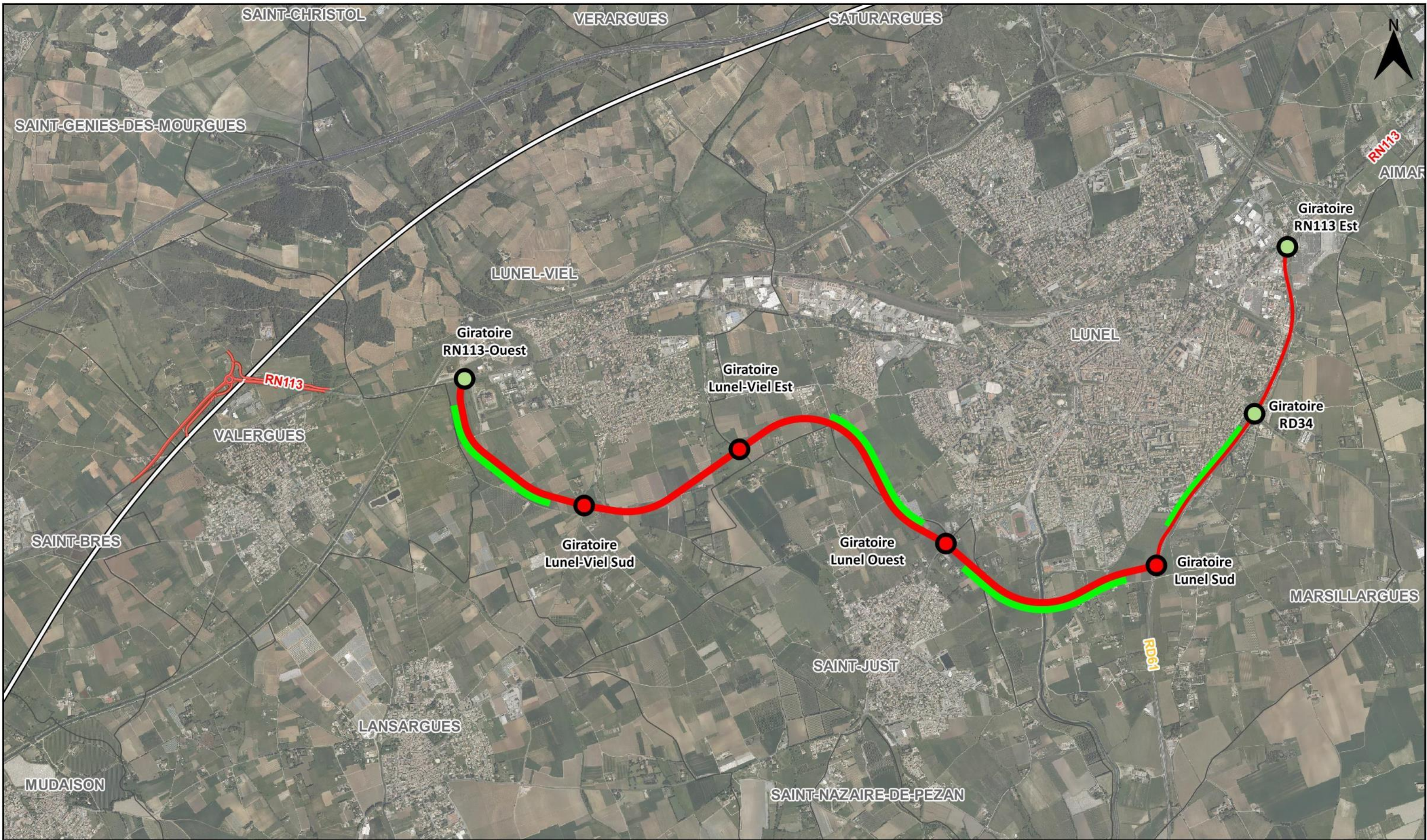
# PLAN DE SITUATION


















Présentation du projet



-  Limite communale
-  Déviation de la RN113 au droit des communes de Lunel et Lunel-Viel
-  Giratoire existant
-  Giratoire à créer
-  Créneau de dépassement
-  RN113 modifiée suite à CNM
-  Axe CNM



